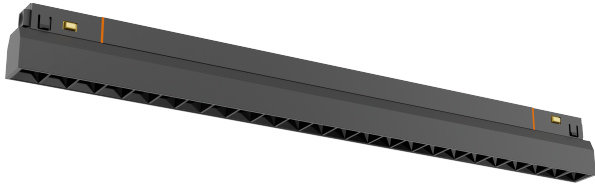
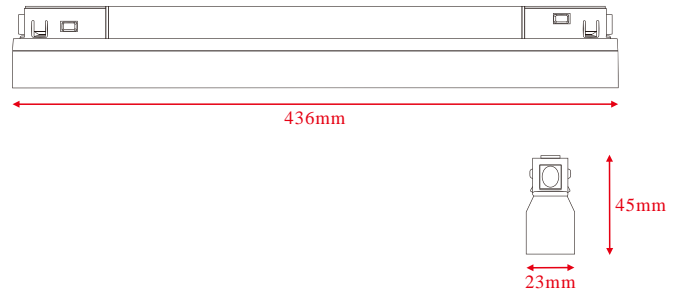


Narrow Beam Angle Magnetic Track Linear Led

Images



Line Graph



| Technical Specification | |
|------------------------------|-------------------------------------|
| Body Colour: | Black/White/Customize |
| Body Material: | Aluminium |
| Beam Angle: | 24°/36° |
| Colour Temperature(K): | 2700K/3000K/3500K/4000K/5700K/6500K |
| Colour Rendering Index(CRI): | 90 (RA80 Available on request) |
| Colour Tolerance: | 3 SDCM |
| Input Voltage: | DC48V |
| Luminaire E cacy: | 90LM/W |
| LED Type: | SMD |
| Led Chip Voltage: | 36V |

| Technical Specification | |
|-------------------------|---|
| Emergency Unit: | No |
| Packaging Type: | Carton/Inner |
| Warranty: | 5 Years |
| IES File: | Available on request |
| Mounting : | Magnetic tracks |
| Lighting Direction: | Direct Lighting |
| IP Grade: | IP 20 |
| Operating Temperature : | -20 - +45°C |
| Flicker: | Flicker Free |
| Dimmable: | DALI2 DT6/8 / PushDim / 0-10V/ Dim Switch / Tuya Wireless/ Other Optional |

| Specification | | |
|---------------|----------------|-------|
| Model | Size | Power |
| miniLED02-6W | L112xW23xH45mm | 6W |
| miniLED02-8W | L220xW23xH45mm | 8W |
| miniLED02-12W | L328xW23xH45mm | 12W |
| miniLED02-15W | L436xW23xH45mm | 15W |
| miniLED02-20W | L652xW23xH45mm | 20W |
| miniLED02-22W | L868xW23xH45mm | 22W |

